

THE NETWORK GUIDE



AGRO
FOOD
PARK

THE NETWORK GUIDE

This book is published by:

Agro Food Park
DK-8200 Aarhus N
Denmark

Tel: +45 87 40 66 40
Email: reception@agrofoodpark.dk
www.agrofoodpark.dk

Graphic design: hapiday
Print: Prima Print
4. edition

Welcome

to Agro Food Park

At Agro Food Park, we are more than 100 companies and 1500 employees gathered in one location. We are a leading innovation environment for agricultural and food companies in Denmark, where operations, development and implementation of ideas go hand in hand. Together, we form a unique environment with a strong network of people across disciplines and competences.

With this networking book, the intention is to create an overview of the companies that live in Agro Food Park through a short presentation. The book makes it easy to reach out to the network, cultivate and strengthen it. In each presentation you will find an associate who is ready to network.

Enjoy the book!

Anne-Marie Hansen

Director



INDEX

3	Welcome	38	Farma Nordic ApS	68	Kombination
4	Index	39	Fishlab	69	KVN Advice
6	4H	40	Food & Bio Cluster Denmark	70	LandboUngdom
7	Actief Hartmanns A/S	41	Food & Co.	71	Landbrug & Fødevarer
8	Agro Advokater	42	Food Nation	72	L & F – Sektor for Økologi
9	Agro Food Park	43	Foodjob Nordic	73	LandbrugsMedierne
10	AgroIntelli	44	FORCE Technology	74	Mariendal IT
11	Akson Robotics	45	Foreningen for Biodynamisk Jordbrug	75	Mascus Denmark A/S
12	AKV Langholt	46	FRDK	76	MEJERIFORENINGEN
13	Alimenta		- Foreningen for Reduceret Jordbearbejdning i Danmark	77	Nature Energy Biogas A/S
14	Arla Foods	47	Frisør Pape	78	NetIP
15	Asia Base	48	Gasa Nord Grønt	79	Nordea
16	Au2mate	49	GLS-A	80	Novenesis
17	Avlsforeningen Dansk Holstein	50	Good Sodas	81	OEM Automatic Klitsø A/S
18	BASF	51	GRENKE	82	Orange Cyberdefense
19	Better Insect Solutions	52	Hammelsvang Trading	83	PlanetDairy ApS
20	Biomass	53	Haugaard Braad	84	Pressebureauet Aarhus
21	Career Space	54	Haystack	85	Prima Print
22	Cath Mersh Communications	55	HedeDanmark	86	RISE
23	CFOPEOPLE A/S	56	HORISONT Hotel & Konference	87	Rockwell Automation, Inc.
24	Cloud-Native ApS	57	HortiAdvice	88	Schippers Denmark
25	Compass Group Denmark A/S	58	HQC	89	SCIO+
26	Cordulus	59	Hushållningsällskapet Halland	90	Scopito
27	Danish Technological Institute	60	INNOVACONSULT Aps	91	SEGES Innovation
28	Department of Food Science Aarhus University	61	Innovationscenter for Økologisk Landbrug	92	SKOV
29	DH Media	62	Instaservice ApS	93	Spiras
30	Diet for Life	63	International Starch Institute A/S	94	Sustainor
31	DLBR P/S	64	Invest in Denmark	95	TeleSense
32	DLBR Revision	65	ISI Food Protection	96	VikingDanmark
33	dol-sensors	66	Jordbrugets Uddannelser	97	VISUE A/S
34	dsm-firmenich	67	Kennedy Kommunikation	98	Warmings
35	Dyrlæger og Ko			99	Wbalance
36	Emma General Trading			100	Würth Elektronik Danmark
37	Farm to Plate			101	Økologisk Landsforening

COMPANIES



4H

Sarah Kristine Skou Andersen

Chief of Secretary

Email: sksa@4h.dk

www.4h.dk

Agro Food Park 15



4H is a Danish children and youth organisation focused on educating children in sustainability through activities related to food, nature, animals and creativity. It currently has 50 local branches run by volunteers and is a member-based organisation. The educational approach is based on children's democracy and learning by doing.

We help children become capable and independent young people who think critically and make sustainable choices. 4H's secretariat is located in Agro Food Park, from where we support the voluntary activities throughout the country.



Actief Hartmanns A/S

Pernille Ravn

Regional Director

Email: Pernille.ravn@actief-hartmanns.dk

www.hartmanns.dk

Agro Food Park 26



Actief Hartmanns is an HR consultancy company that provides services to help companies with short and long-term recruitment, talent attraction, employer branding, as well as HR and management consultancy.

The company has its Aarhus department located in Agro Food Park.



Agro Advokater

Heidi Sehested Mariager

Legal Secretary

Email: hem@agroadvokater.dk

www.agroadvokater.dk

Agro Food Park 15



AGRO Advokater is a legal law firm. The lawyers are specialized in i.a. employment law, company law, liability/insurance, the legal-matters surrounding horses, plant breeding, finances and agricultural matters in general. In addition to advising on business law issues,

AGRO Advokater also provides advice on private law, including the preparation of wills, co-ownership agreements, housing transactions, powers of attorney for the future and prenuptial agreements, etc.



Agro Food Park

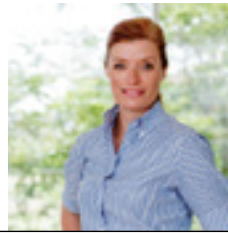
Anne-Marie Hansen

Director

Email: info@agrofoodpark.dk

www.agrofoodpark.dk

Agro Food Park 13, 15 + 26



Agro Food Park is the name of the area in which all the companies are located. It includes around 100 companies and 1.500 employees. Agro Food Park team is responsible for running and maintaining the three

buildings with office rentals, supporting the network between companies and develop the whole area around the buildings. Agro Food Park also hosts several networking activities.



AGROINTELLI

Hans Christian Carstensen

CPO

Email: hcc@agrointelli.com

www.agrointelli.com

Agro Food Park 15



AGROINTELLI

AGROINTELLI is the leading Danish field robotics company. Their focus is on precision farming technologies, the design, building, and distribution of the autonomous ROBOT-TI platform on a global-scale. ROBOT-TI is the name of a robot with an AI that can deal with most farming related duties on a field.

AGROINTELLI has a testing field located between Agro Food Park 26 and Viking Denmark's facilities.



Akson Robotics

Albert Sonne Olesen

CEO

Email: aso@akson-robotics.dk

www.akson-robotics.dk

Agro Food Park 13



Akson Robotics is the team behind the CropUp platform. CropUp is an AI platform that analyses drone images and maps the crop, weed and soil down to centimeter level precision. The mappings can then be used to generate spray maps that fit existing

sprayers and help farmers save up to 90% in herbicide, saving them money and benefiting the environment.



AKV Langholt Amba

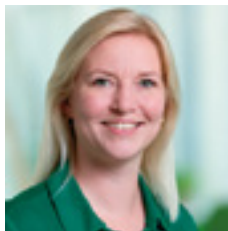
Kathe Nielsen

Export Sales Coordinator

Email: kni@akv.dk

www.AKV.dk

Agro Food Park 13



AKV is a producer of potato starch and protein to the global food, paper and feed industries. Their products are sold in more than 70 countries around the world. AKV is owned by 180+ farmers and converts around 340,000 tons of Danish potatoes per year.

AKV have chosen Agro Food Part to benefit from the knowledge and possibilities the different companies and Agro Food Park provides including the surroundings.



Alimenta

Anders Mikkelsen

Kundeansvarlig Danmark

Email: anders.mikkelsen@alimenta.no

www.alimenta.dk

Agro Food Park 13



Alimenta provides raw materials, spices, technical ingredients, and flavors to the Nordic food industry and are distributor for among others, IFF.

Alimenta has its own development team, available for both new product development and optimizing existing products.

Their production facility mixes ingredients and package blends in quantities starting from 10 grams and upwards, offering a diverse range of packaging solutions customized for both the food industry and retail.



Arla Foods

Sandra Irene Jørgensen

VP Vice President

Email: sajor@arlafoods.com

www.arla.com

Agro Food Park 19



Arla Foods is the 7th largest dairy company in the world and a cooperative owned by 7.765 dairy farmers (07/2024). Arla combines traditional craftsmanship and world-class technologies to ensure its products remain closer to nature, from farm to fridge.

Arla identified that locating a new centre in the Agro Food Park, would give them the opportunity to be an important part of a new “silicon valley” with focus on food innovation – and thus also be close to their collaborators in this area.



Asia Base

Anders Ravn Nielsen

Director of Research & Strategy

Email: arn@asiabaselaw.com

www.asiabase.com

Agro Food Park 13



Asia Base is a Danish business consultancy with its main activities located in China. Over the past 30 years they have helped foreign companies acquire, establish, and grow competitive profitable businesses in China, many of which are agro- and food related.

In 2008 Asia Base founded the stable-to-table project "Scandinavian Farms".

Asia Base Holding is located in Agro Food Park.



Au2mate

Jan Bendix

Sales Director

Email: jbn@au2mate.dk

www.au2mate.dk

Agro Food Park 26



Au2mate is an automation and industrial IT provider and are experts in this field. They are a project-based enterprise, striving to be the preferred partner in the process industry by delivering unique quality to their customers.

One of the reasons Au2mate have an office in Agro Food Park is the unique networking possibility within the Danish food sector as well as working in an inspiring and innovative office community.



Avlsforeningen Dansk Holstein

Torben Lund

Executive Officer

Email: info@danskholstein.dk

www.danskholstein.dk

Agro Food Park 15



Avlsforeningen Dansk Holstein is an interest organization, that works on behalf of the Danish Holstein farmers. They work for the overall breeding goal and to promote the interest and understanding of the importance of breeding among farmers. Dansk Holstein represents farmers in professional issues regarding development, implementation, and other breeding issues.

Dansk Holstein is in Agro Food Park, because the environment offers a unique opportunity for interaction with stakeholders within the cattle business.



BASF

Grethe Thaysen, Senior Technical Sales

Manager Human-Nutrition

Email: grethe.thaysen@basf.com

www.basf.com

Agro Food Park 15



At BASF, we create chemistry for a sustainable future. More than 111,000 employees in the BASF Group contribute to the success of our customers in nearly all sectors and almost every country in the world.

BASF in Agro Food Park

External office in an innovative environment in the business area from agro to final food.



Better Insect Solutions

Lars-Henrik Lau Heckmann

Head of Business Development

Email: : lh@betterinsectolutions.com

www.betterinsectolutions.com

Agro Food Park 15



Better Insect Solutions (BIS) is the insect farming concept and solution hub of the Big Dutchman group, powered by the sister companies Big Dutchman, INNO+ and SKOV. Since 2020, BIS has been operating in the insect farming sector, bringing together the insect-optimized technology solutions and new product developments of the sister

companies ensuring that BIS today has a complete project solution for farming of black soldier fly based on in-house products and systems.



Biomass

Thomas Byriel

Project Manager

Email: tb@biomass.dk

www.biomass.dk

Agro Food Park 13



BioMass.dk

BioMass.dk buys and sells biomaterial for the creation of biogas. They are a part of the Danish Biogas Industry. Their purpose is to assist producers of sustainable biological byproducts/waste, by recycling the byproducts for green biogas energy. Biomass.dk has several storage facilities, to receive goods by truck or ship.

BioMass.dk is part of the incubator for start-ups in Agro Food Park, and they also have offices in other locations around Denmark.



Career Space

Johanne Birn

Space Manager

Email: jobi@agrofoodpark.dk

www.agrofoodpark.dk/project-career-space

Agro Food Park 13



**CAREER
SPACE**

Career Space is a part of Agro Food Park. It is a space for students to hang out, do projects and work on assignments. But it is also a place that exists to prepare students for a future in the agriculture and food business.

Students and companies can connect through activities and events. It is a great way for companies to get to know their potential future employees.



Cath Mersh Communications

Cath Mersh

Consultant

Email: cath@mersh.dk

www.cathmershcommunications.dk

Agro Food Park 13



Cath Mersh is a journalist and communication consultant specialised in the agrifood sector. Cath Mersh Communications supports companies and organizations with communication needs related to EU projects, branding campaigns, corporate sustainability and scientific papers.

Cath Mersh Communications work includes content for multiple channels, articles for trade press, reports, podcasts and editing of short videos.



CFOPEOPLE A/S

Rasmus Jerver

Partner & Founder

Email: rj@cfopeople.com

www.cfopeople.com

Agro Food Park 15



CFOPEOPLE specializes in emergency financial recruitment. They match your need quickly and precisely - whether it is an acute or longer-term need - within 10 working days - anywhere in Denmark.

Their services are divided into 4 categories: Interim Services, Recruiting, Try & Hire and Executive Search.

Together with their customers they identify needs and find the solution that fits best.



Cloud-Native ApS

Mike Larsen

Director

Email: mike@cloud-native.dk

www.cloud-native.dk

Agro Food Park 26



At CloudNative, we assist companies with complex IT projects in cloud technologies and DevOps. We offer consulting, architecture design, implementation, and workshops, enabling companies to operate secure and scalable solutions independently.

We contribute in the early stages of projects and set the direction for digital transformation with tailored solutions to meet our customer's needs.



Compass Group Denmark A/S

Claus Nisted

Operations Manager

Email: Claus.Nisted@compass-group.dk

www.compass-group.dk

Agro Food Park 26



Compass Group Denmark is a provider of facility management, food service and cleaning. They serve a wide variety of companies across many different industries. Compass loves how food brings people together and strive towards delivering good, sustainable, and efficient food service based on the freshest, most innovative ideas.

Compass operates under the brands: Food & Co, Eurest Facility Services and ESS.

Compass Group Denmark is responsible for catering and cleaning services in Agro Food Park.



Cordulus

John Smedegaard

CEO

Email: js@cordulus.com

www.cordulus.com

Agro Food Park 13



Cordulus is a technology company that delivers hyper-local weather data and AI solutions to their customers, that helps them in making proactive decisions and managing risks. With their two industry solutions, Cordulus Farm and Cordulus Road, Cordulus deliver weather station solutions to both farmers and traffic authorities.

Cordulus has several weather stations placed around Agro Food Park for testing purposes.



Danish Technological Institute

Bodil Højland Lorentzen

Director

Email: bhl@teknologisk.dk

www.teknologisk.dk

Agro Food Park 15



Danish Technological Institute delivers solutions that create value for our customers. They develop, validate and document technological solutions and products through tests and trials – and continuously build and create knowledge through research and development activities via partnerships with Danish and international companies and research institutes.

At the Center of Agriculture and Digitalization, located in Agro Food Park, the team of

experts supports the green transition of the agricultural sector by bringing forward digital technologies and innovative solutions within e.g., field trials, emissions from agriculture, bio-solutions, plant biologicals, biodiversity, microbiology, soil health, CCUS, AI, precision farming, automatization, and robotics.



Department of Food Science Aarhus University

Hanne Lakkenborg Kristensen

Lecturer, Appointed Head of Department

Email: hanne.kristensen@food.au.dk

www.food.au.dk **Agro Food Park 48 + 26**



The Department of Food Science, Aarhus University, has leading capabilities and resources within research, extensive state-of-the-art research infrastructure, as well as active national and international networks, and is therefore able to make significant contributions to current food related global challenges.

They focus on dissemination, development, demonstration and implementation of research. Most of the research is carried out in collaboration with partners.

They house laboratories, teaching facilities, green houses, offices. Department of Food Science have an office in Agro Food Park 26 and a field research site in Auning.



DH Media

Christian Skipper

Director

Email: cs@dhmedia.dk

www.dhmedia.dk

Agro Food Park 26



DH Media is a company that produce and publish multiple business specific medias to companies and people with an interest in the danish grocery industry. They have access to a valuable target group that you cannot reach elsewhere. Their media is unifying for an entire industry and is read by decision makers, suppliers and organizations.

DH Media has their offices in Agro Food Park, where the journalists, sales department and management is located.



Diet4Life

Jan Stagsted

CEO

Email: js@diet4life.dk

www.diet4life.dk

Agro Food Park 15



Diet4Life is an R&D company with a focus to develop, refine, and apply high-throughput screening methods for identification and characterization of food-derived molecules that initiate, enhance or otherwise modify cellular signals.

They develop identified molecules into potential nutritional supplements/food ingredients in our laboratory facilities in Agro Food Park.



DLBR P/S

Dorthe Laursen

Director

Email: drl@dlbr.dk

www.dlbr.dk

Agro Food Park 15



DLBR P/S, founded in 2024 by 16 Danish agricultural consultancy firms, is behind a number of financial IT solutions for small and medium-sized businesses. The flagship product is the accounting software Inter-Count, which automates accounting and uses AI for real-time data analysis, helping businesses make informed decisions.

Furthermore, DLBR P/S aims to help position and strengthen agricultural advising in Denmark, thereby supporting innovation within the agricultural sector.



DLBR Revision

Jens Faurholt

Owner & Accountant

Email: jens.faurholt@dlbr-revision.dk

www.dlbr-revision.dk

Agro Food Park 13



DLBR Revision is an independently approved audit limited company with 20 years of experience in auditing and advising small and medium-sized companies.

They have a great deal of knowledge and experience when it comes to auditing of accounts and consulting.

DLBR Revision is a part of Agro Food Park to use their network in the food and agricultural industry.



dol-sensors

Margit Skovbjerg Berner

R&D Manager

Email: msb@dol-sensors.com

www.dol-sensors.com

Agro Food Park 15



dol-sensors a/s is a global brand that innovates, designs, and produces capacitive and climate sensors and tailormade sensor solutions for improving livestock production and animal welfare.

dol-sensors is located in Agro Food Park to be close to other companies in the feed and farming industry. This gives them more opportunities to corporate and innovate new sensor solutions.



dsm-firmenich

Jacob Ravn Nielsen

Sales Director

Email: jacob.ravn.nielsen@firmenich.com

www.dsm-firmenich.com

Agro Food Park 13



dsm-firmenich 

dsm-firmenich seeks to tackle the tension between what society needs, what people individually want, and what the planet demands in the areas of nutrition, health, and beauty.

They work closely together with customers to create what is essential for life as well as desirable for consumers yet simultaneously more sustainable for the planet.

dsm-firmenich is poised to bring progress to life for billions of people around the world.

dsm-firmenich has their nordics department located in Agro Food Park.



Dyrlæger og Ko

Rune Friis Kristensen

Director

Email: rune@dyrlaegerogko.dk

www.dyrlaegerogko.dk

Agro Food Park 15



Dyrlæger & Ko is a veterinary corporation with 28 individual member practices and 146 veterinarians all specialized in herd health, production and reproduction in cows. Our members are professional advisors and partners for the farmer with ambitions and a belief that healthy cows and healthy business are connected.

We work daily with more than 1,600 herds and thus providing veterinary services to more than 60 % of the total dairy cow population in Denmark.



Emma General Trading

Peris Rashad

Co-Founder / Director

Email: peris@emma-company.com

www.emma-company.com

Agro Food Park 13



Denmark's leading company with a primary focus on exports to Iraq

The business's focus is to facilitate trade between Iraqi wholesalers/importers/distributors and Danish as well as international producers of a range of highly demanded food products in the Iraqi market.

The overall business objective is to ensure smooth trade between sellers/producers in Denmark and wholesale/import buyers in Iraq, through a comprehensive Full-Service offering that includes administrative, financial, and regulatory services.

Founder Peris Rashad aims to leverage his cultural and business expertise, to establish direct trade between Denmark and Iraq. The Iraqi market presents significant opportunities for the import of Danish and international quality products.

Emma General Trading & Export-Import Company ApS's primary customers are large importers/distributors in Iraq who have access to a substantial and purchasing-capable market with a strong demand for Western quality products.

Farm to Plate

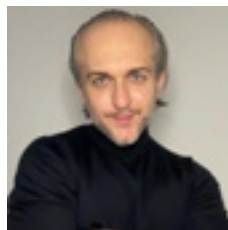
Alex Pawlowski

Sr. Manager Business Growth & Partnerships - EU

Email: Pernille.ravn@actief-hartmanns.dk

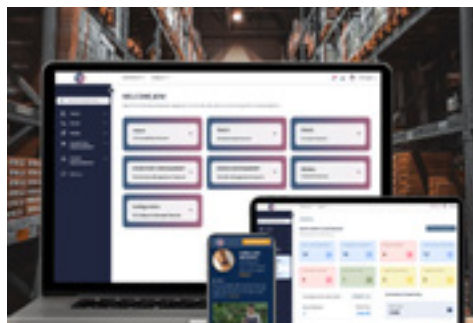
www.farmtoplate.io

Agro Food Park 13



Farm to Plate” is a comprehensive food track and trace solution designed to ensure transparency and safety in the food supply chain. It enables consumers and stakeholders to trace the journey of food products from their origins at the farm to the final point of sale. Utilizing advanced technologies like blockchain, IoT, and data analytics, Farm to Plate provides real-time tracking of food products, ensuring authenticity, quality, and compliance with safety standards.

This solution enhances trust between producers and consumers, reduces food fraud, and enables swift responses to contamination or recalls, promoting a safer and more transparent food system.



Farma Nordic ApS

Henrik Jensen

Sales Manager

Email: hj@farmanordic.com

www.farmanordic.com

Agro Food Park 15



Farma Nordic is involved in animal health and nutritional advisory for livestock farming in Scandinavia. Their products minimize the time spent diagnosing transition issues, strengthen the immunesystem of animals and keep the infection pressure at a low level. These products ensure optimal growth conditions for the animals, and prevents the potential for pathogen microorganisms.

This is achieved by ensuring a good daily hygiene in the stables and using systematically right nutrition products.



Fishlab

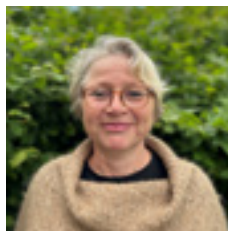
Kirsten Engell-Sørensen

CEO

Email: kes@fishlab.dk

www.fishlab.dk and www.hestelaboriet.dk

Agro Food Park 15



Fishlab has many years of experience in aquatic environmental surveillance and innovation of aquaculture fish fry production. Fishlab has assignments for private and public institutions in Denmark and internationally actively takes part in innovative research projects and often act as a link between universities and the industry.

Fishlab is accredited by DANAK and has assignments for the Ministry of Environment of Denmark regarding environmental national surveillance of zooplankton, marine and freshwater benthic fauna communities, submerged freshwater plant investigations and more.

Fishlab performs semi-extensive and intensive fish larvae production and is currently developing a new kind of live feed for fish produced in aquaculture: ENCHYTRAEUS. Hestelaboriet perform DANAK accredited analysis of horse parasites for approximately 70 veterinary clinics in Denmark.



Food & Bio Cluster Denmark

Kathrine Lykke Kirk

Haystack Manager

Email: klk@foodbiocluster.dk

www.foodbiocluster.dk

Agro Food Park 15



Food & Bio Cluster Denmark is the national cluster organisation for the Danish food and bioresources. The cluster is a unifying platform for knowledge-based innovation, collaboration, and growth – for companies and knowledge institutions.

Food & Bio Cluster Denmark has its head-quarter in Agro Food Park 13, where it is responsible for Haystack, the incubator for startups.



Food & Co.

Claus Nisted

Operations Manager

Email: Claus.Nisted@compass-group.dk

www.compass-group.dk

Agro Food Park 13, 15 + 26



Food & Co.

Food & Co. is one of the brands that Compass Group operates through. That is why everyone who works in one of Agro Food Parks three eateries carries this brand. Read more about Compass Group on page 24.

The three eateries in Agro Food Park:

Café in no. 13:

Barista coffee, cakes, open all day

Canteen in no. 15:

Largest, most traditional food

Canteen in no. 26:

Organic food, more greens



Food Nation

Malene Rygaard

Office Manager

Email: mary@foodnationdenmark.dk

www.foodnationdenmark.com

Agro Food Park 13



Food Nation is a public-private partnership established by the Danish government and leading private organisations and companies. They create awareness of Denmark as a frontrunner in innovative, sustainable, and effective food production.

The strongholds of the agri-food sector are presented through interactive experiences in the Visitor Centre in Agro Food Park 13 and in Copenhagen and invite you to strengthen collaboration with international stakeholders.



Foodjob Nordic

Martin Alsted

Senior Advisor

Email: mga@foodjobnordic.com

www.foodjobnordic.com

Agro Food Park 13



FOODJOB
NORDIC

Foodjob Nordic is a recruitment partner in the food industry. They offer Search & Selection solutions to clients in the Agro and Food Industries in the Nordics. Their services include: Recruitment of Managers and Specialists, Market analysis and business case for recruitment, Career counseling of candidates and Establishment of international and specialized networks in the Agro and Food industry.

The Foodjob Nordic headquarter is located in the center of the Danish Food Cluster in Agro Food Park.



FORCE Technology

Allan Grønkær Kristensen

Director, Compliance & Product Testing

Email: agkn@forcetechnology.com

www.forcetechnology.com

Agro Food Park 13



FORCE Technology is a technology consulting and service company that works to create positive technological change and make the world more sustainable and safe. They do on-site inspections, measurement and data collection, and offer a comprehensive and unique infrastructure of facilities and laboratories for testing, calibration and analysis.

As a government-approved Research and Technology Organisation, they help companies get market access through their wide range of services, supplied from or via their Aarhus facilities in Agro Food Park.



Foreningen for Biodynamisk Jordbrug


Klaus Loehr-Petersen, Project Manager

Email: info@biodynamisk.dk

www.biodynamisk.dk

Agro Food Park 26



 Foreningen for
Biodynamisk Jordbrug

Association for Biodynamic Agriculture is the oldest organics organization in Denmark. They are part of the international network Biodynamic Federation Demeter International and certify farms and companies in Denmark according to the international Demeter Standards. They have close relations with Økologisk Landsforening regarding standpoints, politics and scientific aspects.

Association for Biodynamic Agriculture is now situated in Agro Food Park 26 together with the other companies in Agro Food Park working specifically with organic farming and food production.



FRDK - Foreningen for Reduceret Jordbearbejdning i Danmark

Hanne Schønning, Comm. Consultant

Email: hsc@frdk.dk

www.frdk.dk

Agro Food Park 15



FRDK is the association for reduced tillage in Denmark. Their purpose is to promote minimum tillage, no tillage and conservation agriculture. They give farmers reasons to manage their soil in a more sustainable way with less or no cultivation, use of cover crops and versatile crop rotation. All this is to keep a healthy financial position for the farmer, while maintaining productive soils for future generations.

FRDK has their secretariat located in Agro Food Park.



Frisør Pape

Trine Pape

Owner

Email: frisorpape@gmail.com

www.frisorpape.dk

Agro Food Park 15



Frisør Pape is a hair salon in Agro Food Park. The reason why it is here is to give the employees of Agro Food Park the freedom and flexibility to take a small break from work, while also crossing off a visit to the hairdresser from the to-do list. Trine Pape is ready to welcome you to a little respite in the busy everyday life.

A hair salon might not be a typical service provider to associate with a place like Agro Food Park, but they want to make it as convenient as possible to be part of Agro Food Park.



Gasa Nord Grønt

Frederik Bæhr Harfot

Marketing Project Manager

Email: fbh@gng.dk

www.Gng.dk

Agro Food Park 26



Gasa Nord Grønt supply fresh and Danish produced fruits and vegetables with a strong focus on an organic and sustainable production. Gasa Nord Grønt's products are delivered every day to retail- and food service markets directly from the growers.

Gasa Nord Grønt is a cooperative owned by the growers they represent.

Their headquarter is located in Agro Food Park, and they enjoy being close to business partners in the industry.



GLS-A

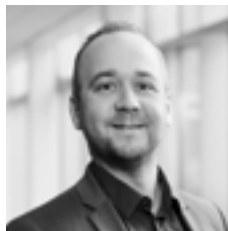
Stephan Vinther Petersen

Communications Consultant

Email: svp@gls-a.dk

www.gls-a.dk

Agro Food Park 13



GLS-A is the employers organization for companies in the green sector, e.g. farms and forests, agricultural contractors, garden nurseries and industries in the sector.

GLS-A generally supports its members within collective work agreements, labour law, working environment, education and HR. GLS-A has several membership benefits to offer and we welcome companies of all sizes.

GLS-A's business and head office is in Agro Food Park, because they cooperate with SEGES Innovation, Jordbrugets Uddannelses- og Forskningscenter and other companies located in Agro Food Park.



Good Sodas

Peter Vinther

Founder

Email: peter@good-sodas.com

www.good-sodas.com

Agro Food Park 13



good sodas®

By applying the latest knowledge within fermentation and organic ingredients, Good Sodas® want to challenge the conventional soda experience and provide consumers with a healthier and more tasteful choice of sodas.

Good Sodas® have a natural and aromatic taste that will elevate your soda experience to new heights and complement any meal or any endeavor.



GRENKE

Peter Kalle

Financial Advisor

Email: pkalle@grenke.dk

www.grenke.dk

Agro Food Park 26



GRENKE offers leasing solutions to companies in all industries. They are part of a global group with more than 44 years of experience within leasing. It is possible to lease directly with them or via one of their resellers. Whether it is IT equipment, interior or other equipment for businesses – they can be of support. Together with the customer an overview is created in order to optimize businesses and prioritize liquidity.

GRENKE's Aarhus department is located in Agro Food Park 26.



Hammelsvang Trading

Ulrik Hammelsvang Andersen

Owner & Founder

Email: uha@hammelsvangtrading.com

www.hammelsvangtrading.dk

Agro Food Park 15



Hammelsvang Trading's focus is the agriculture business, the goal is to support dairy and livestock dealers with unique products and service to increase animal welfare.

Hammelsvang Trading offers products and solutions for dairy, cattle and calve farming.

Hammelsvang Trading's product range consists of Natural Ventilation, Stabling, Water troughs, Calf Suites, Fans and Cow brushes.



Haugaard|Braad

Simon Laulund Bro

Advokat

Email: slb@haugaardbraad.dk

www.HaugaardBraad.dk

Agro Food Park 15



Haugaard|Braad
Advokatfirma

Haugaard|Braad is a Danish law firm that offers legal services and advise to public and private corporations, businesses, and institutions across Denmark. They provide legal counsel across a wide range of practice areas and located in Aarhus they have a dedicated expert team within environmental and agricultural law.

Haugaard|Braad is part of Agro Food Park because they want to participate in the

innovative and relevant community, and to foster collaboration across sectors that can contribute to the continuous development of the agricultural and food sector in Denmark, including particularly the green transition, climate solutions, and sustainability.



Haystack

Kathrine Lykke Kirk

Haystack Manager

Email: klk@foodbiocluster.dk

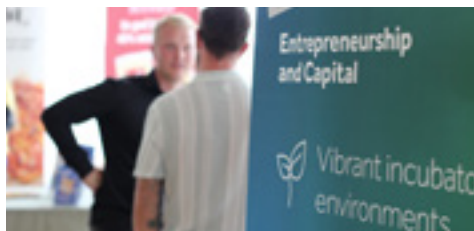
www.agrofoodpark.dk/haystack

Agro Food Park 13



Haystack is the sector specific incubator for agri and food start-ups in Agro Food Park. Food & Bio Cluster Denmark runs Haystack and offers advice within business development, financial planning and guidance in soft-funding. As an entrepreneur you also get access to investors and a large B2B network.

The advice is based on exactly your situation, so that you get the guidance that covers exactly your needs.



HedeDanmark

www.hededanmark.dk

Agro Food Park 26



HedeDanmark is Denmark's largest green contracting company. They specialize in forestry, afforestation, green area maintenance, landscape and construction tasks and circular bioeconomy. HedeDanmark specialize work strategically to increase biodiversity, reuse nature's resources and combat climate change.

HedeDanmark is part of Hedeselskabet, which has worked with and in nature since 1866 and has a vision of building a sustainable future with nature as a partner.



HORISONT Hotel & Konferenc

Rasmus Soelberg

Hotel Manager

Email: rasmus@horisont-aarhus.dk

www.horisont-aarhus.dk

Agro Food Park 10



A short walk from Agro Food Park you find Horisont Hotel & Conference. This is the place to be if you are looking for a professional host to your conference, course, meeting or job interview. If you have guest or colleagues visiting in Aarhus, Horisont offers modern and comfortable hotel rooms to, and if you are arranging an exclusive company dinner, lunch or breakfast, the restaurant are ready to welcome you.

Horisont is a part of the Danish Agriculture & Food Council and are among the preferred conference centers for the sector.



HortiAdvice

Thomas Skovgaard Lund

Director of R&D

Email: tol@hortiadvise.dk

www.hortiadvise.dk

Agro Food Park 15



HortiAdvice is a consultancy within horticulture, fruit growing, vegetable production and plant nursery. The main objects of HortiAdvice is to provide consultancy, research and development as well as other activities related to the horticultural industry. Their activities are performed in all the aspects of the crop production, finance, management, technology and subsidy schemes.

HortiAdvice is a part of Agro Food Park to network, connect and collaborate with other companies in the industry.



HQC

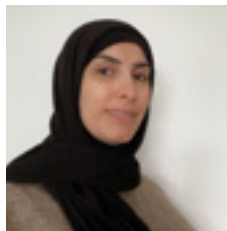
Lillian Dakkak

SHQC Scandinavia Office director

Email: lillian@hqc-denmark.dk

www.hqc-denmark.dk

Agro Food Park 15



Halal Quality Control Denmark (HQC), your shortest way to halal certification especially if you are in Scandinavia. We are next to you and ready to support you reaching the halal requirement, with globally recognized certificate.

Our mission is to support different industrial sectors in reaching the halal requirements, in order to gain robust and stable access to the international market.

Our vision is to create the future of halal certification services in the whole Europe, especially the Scandinavian region, to let all high-quality halal goods reach every place in the world.



Hushållningssällskapet Halland

Susanne Paulsson, Senior Project Manager

Email: susanne.paulsson@hushallningssalls-kapet.se

www.hushallningssallskapet.se/halland

Agro Food Park 13



Hushållningssällskapet is a body of knowledge transfer. They offer advice, field trials, research and development – for agriculture and rural communities into the future. In Halland they focus on issues in the food value chain – based on the needs of Halland and its surroundings. They advise about business development, innovation, biogas, energy, rural development, nature and water management, environment, climate and cultivation.

Hushållningssällskapet Halland is in Agro Food Park to find and develop collaborations in the green sector.



INNOVACONSULT Aps

Lisbeth Ankersen

Owner

Email: lisbeth@innovaconsult.dk

www.innovaconsult.dk

Agro Food Park 13



INNOVACONSULT APS specialises in describing, optimizing and communicating tastes of all kinds of foods and beverages. They can provide you with sensory evaluations where scent, flavour/taste and texture is described, which can be used for marketing and strategic product development. INNOVACONSULT also hosts talks and workshops with various themes of scent and flavour.

INNOVACONSULT APS is in Agro Food Park to connect and network with companies in the food industry.



Innovationscenter for Økologisk Landbrug

Kirsten Holst Sørensen, Director

Email: kirh@icoel.dk

www.icoel.dk

Agro Food Park 26



The Innovation Centre for Organic Farming is the centre for developing organic, sustainable farming in Denmark. They work in a holistic and interdisciplinary manner, based on the UN's 17 Sustainable Development Goals and the four global organic principles: Health, Ecology, Fairness and Care.

Their focus areas are biodiversity, climate, plant based food production, nutrient flow and animal welfare, and they collaborate closely with farmers and agricultural advisory centres and other partners all over Denmark and abroad to find the best solutions.



Instaservice ApS

Helle Bælum

Customer & Personnel Consultant

Email: hb@instaservice.dk

www.instaservice.dk

Agro Food Park 15



INSTASERVICE is a recruitment & temp agency specializing in the HORECA sector, providing staff for kitchen, canteens & cleaning services.

We offer fulltime & temporary jobs for skilled Chefs, Caterer & nutrition assistants, as well kitchen helpers & dishwashers.

All our temps receive salaries and employment in accordance with collective agreements.

Whether you are a company or a jobseeker, you can expect up-to-date solutions from us. Our consultants are trained in kitchens themselves. This enables us to offer expert advice to clients and employees.



International Starch Institute A/S

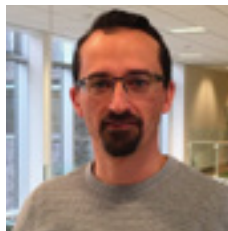
Sven Pedersen

Project Manager

Email: sven.pedersen@starch.dk

www.starch.dk

Agro Food Park 13



International Starch Institute A/S (ISI) is a family owned company with experience in the starch and sweetener industry since 1964. Their core supply is turnkey factories worldwide for manufacturing of native starch and down-stream products like modified starches and sweeteners. They have created plants all over the world. Their approach is to simplify processes and develop control systems to minimize downtime and interaction from operators.

International Starch Institute has their headquarters located in Agro Food Park.



Invest in Denmark

Katrine Dalsgaard Skovly

Special Advisor

Email: katsko@um.dk

www.investindk.com

Agro Food Park 13



Invest in Denmark provides confidential and tailor-made solutions for foreign companies looking to set up a new business in Denmark or expand an existing one. The key industries they work with are CleanTech, Tech, Life Science and Food.

Invest in Denmark has an office in Agro Food Park. They see it as a hub for innovation, research and development, and wants to tap into the ecosystem and offer support to international companies looking to invest in Denmark's Agro-Food industry.



ISI Food Protection

Dieter Elsser-Graversen

Managing Director

Email: deg@isifoodprotection.com

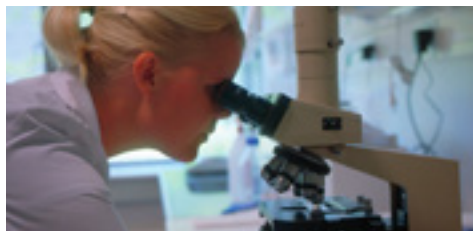
www.isifoodprotection.com

Agro Food Park 13



ISI Food Protection is the go-to centre of expertise for applied food and plant microbiology. As independent consultants to the global food industry, ISI offers specialised laboratory services and support for customised food protection strategies.

In the Agro Food Park, ISI Food Protection has biosafety level 3* classified laboratories and a food pilot plant.



Jordbrugets Uddannelser

Henning Gregersen

Head of Secretariat

Email: juhg@judd.dk

www.judd.dk

Agro Food Park 15



**JORDBRUGETS
UDDANNELSER**

Jordbrugets Uddannelser is made up of representatives from L&F, GLS-A and 3F. It is a professional committee for animal caretakers, gardeners, forest and nature technicians as well as agricultura education and AMU education within these areas.

They are also responsible for the content and framework of educational programmes, relevant analysis, development projects, contact with ministries and organisations, approvals of training companies etc.

Jordbrugets Uddannelser benefits from being in Agro Food Park with acces to professional sparring with the green sector.



Kennedy Kommunikation

Birte Kennedy

Owner

Email: info@kennedy-kommunikation.nu

www.kennedy-kommunikation.nu

Agro Food Park 13



**Kennedy
Kommunikation**

Kennedy Kommunikation helps companies and organizations to communicate pro-actively and purposefully to employees, customers and business partners.

Birte Kennedy is the owner of the company and she has a solid experience with pretty much everything within communication, branding and dissemination.

Kennedy Kommunikation is a part of the incubator for startups in Agro Food Park.



Kombination

Lars Halskov

Advisor & partner

Email: lh@kombination.dk

www.kombination.dk

Agro Food Park 13



Kombination is a Danish consultancy firm that specializes in helping businesses with strategic growth, commercial development, and market positioning.

We provide tailored solutions for both startups and established companies across various industries, such as food & nonfood, tourism & culture, technology & industry. Our expertise spans from refining business models and business strategies to implementing marketing and sales strategies, with

a particular focus on data-driven decisions. By leveraging proven tools, we help clients optimize sale and increase revenue. For more details, you can visit our official website.



KVN Advice

Kjeld Vodder Nielsen

Advisor and sparring partner

Email: kvn@kvnadvice.dk

Agro Food Park 13



KVN Advice is an advisor and sparring partner in the food industry. Their core services are business consultancy and capacity strengthening that develops food production in Denmark and developing countries/the Global South.

They deal with Project and business development in consultation with companies / organizations.



LandboUngdom

Uffe Engsig

Chief of Secretary

Email: uffe@landbounngdom.dk

www.landbounngdom.dk

Agro Food Park 15



LandboUngdom is an organization for young people with an interest in better conditions for transport, education and job opportunities in the countryside and rural areas. They have over 45 local branches run by volunteers. It is a member-based organization valuing democratic and non-formal education for young people. LandboUngdom also has agriculture's largest jobportal: Jobstafet.dk.

LandboUngdom's secretariat is located in Agro Food Park, from where they support the voluntary activities throughout the country.



Landbrug & Fødevarer

Katrine Nørskov

HR Consultant

Email: Katn@lf.dk

www.lf.dk

Agro Food Park 13 + 15



Landbrug & Fødevarer (The Danish Agriculture & Food Council) is the business organization for the Danish agriculture, food and agro industry.

Together with members and politicians L&F influence the business policy for the entire cluster. The aim is to create a framework where Danish farmers and food industry can produce and continually evolve competitively with a green agenda at the centre. L&F's head office is located at Axelborg in Copenhagen.

A majority of L&F-members from both the food industry and the farmers are located in Jutland. So having offices in Agro Food Park makes much sense for L&F.



Landbrug & Fødevarer Sektor for Økologi

Kirsten Lund Jensen, Head of Organic Unit

Email: ki@lf.dk

www.lf.dk

Agro Food Park 26



Landbrug & Fødevarer (The Danish Agriculture & Food Council) has a specific "Organic Sector".

Here they work with organic food and farming, and is responsible for the professional politics of L&F in account to organic production. They also represents the professional interests of the organic farmers in Denmark and makes their opinions and needs visible.

The organic sector is located in Agro Food Park 26, where other companies who also works with organic food and farming is located.



LandbrugsMedierne

Søren Queitsch

Commercial Director

Email: squ@landbrugsmedierne.dk

www.landbrugsmedierne.dk

Agro Food Park 13



 LandbrugsMedierne

LandbrugsMedierne, is a media company focusing on the agriculture business in Denmark. They are primarily targeted farmer's and publish among other things the biggest magazine in the farming industry in Denmark, LandbrugsAvisen.

LandbrugsMedierne have different activities within publishing and marketing and are active on several platforms.

In Agro Food Park it is primary LandbrugsMedierne's sister company, Mascus, that is active. They sell used equipment for farmers and entrepreneurs.



Mariendal IT

Ole Hall Johannesen

Business Developer

Email: ohj@mariendalit.dk

www.mariendalit.dk

Agro Food Park 13



Mariendal IT A/S has a wide range of IT and digital services aimed at small and medium-sized companies. This includes IT security, support, consulting, project management, integration of systems, hardware and software development.

They offer individual solutions designed to meet each company's unique challenges and needs. Whether it's implementation, integration, new software solutions, or just advice when choosing and buying hardware.

Mariendal IT is in Agro Food Park because it is a center for the green transition, which for the most part is dependent on IT and data use.



Mascus Denmark A/S

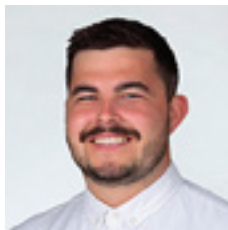
Mathias Bonde Neumann

Country Manager

Email: mne@mascus.dk

www.mascus.dk

Agro Food Park 13

The Mascus logo, featuring the word "MASCUS" in a bold, italicized, black sans-serif font, preceded by a small orange square.

Mascus is a subscription-based online marketplace for buying and selling used machinery. Mascus offers integrated webshops, reporting and inspection tools, and specializes in integrations with third-party solutions. Mascus offers a cloud-based SaaS solution for sales management and operates in multiple industries such as agriculture, construction, transport, and forestry.

Mascus is in Agro Food Park since they are partially owned by LandbrugsMedierne, who has an office in the incubator for startups in Agro Food Park.



MEJERIFORENINGEN

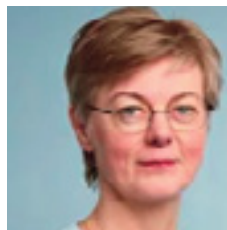
Marie Gang Larsen

Head of Communication

Email: info@mejeri.dk

www.mejeri.dk

Agro Food Park 13



MEJERIFORENINGEN

Mejeriforeningen (The Danish Dairy Board) is the Danish dairies' industry organisation. Employees in the organisation are experts on milk, dairy products, food safety and nutrition, and offer a wide range of services to its members. They represents and acts on behalf of its members in issues concerning commercial and political interests both in DK and internationally.

Agro Food Park is the perfect location as it brings together both farmers, businesses and researchers who are all dedicated to the of future development and success of the agriculture and food sector.



Nature Energy Biogas A/S

Emilie Mariegaard

Talent Relations Specialist

Email: Emar@nature-energy.com

www.nature-energy.com

Agro Food Park 26



Nature Energy builds biogas plants and transforms waste products and biological waste into biogas. The degassed biomass is returned to agriculture as fertilizer, ensuring a circular economy. Nature Energy is headquartered in Denmark where they operate 13 biogas plants, and have plants in development in the Netherlands, France, and North America.

Nature Energy is in Agro Food Park to ensure suitable facilities for their employees, in a pleasant, inspiring, and social environment. They will also be in Project & Career Space to connect with students.



NetIP

Ida Røge Sund

Operations Manager, Business

Email: irs@netip.dk

www.netip.dk

Agro Food Park 26



NetIP is a full-service IT provider of consultancy-, advisory-, security-, and outsourcing-services, as well as solutions within infrastructure and SharePoint.

NetIP primarily target SMB-market companies, and they build their culture on openness, trust, and security.

Currently, netIP has more than 200 employees spread across eight locations in Denmark. By the end of 2024, netIP will open their 9th location, which will be in Odense.



Nordea

Stine Hjarnø Jørgensen

Agri & Food

Email: Stine.Hjarno.Jorgensen@nordea.com

www.nordea.dk

Agro Food Park 13



Nordea

Nordea is a European bank working in the Nordics with full line (bank, leasing and real-credit) service in Denmark.

Nordea has a department working with the agricultural & food sector in Denmark. They believe that companies in the food cluster will make a strong contribution to a climate friendly future.

They wish with their presence in Agro Food Park to support entrepreneurs and growth in the food cluster with relevant networks, banking sparring and investors.



Novonesis

Ditte Marie Vincentz Brandt

Marketing Manager, North Europe

Email: dmb@novonesis.com

www.novonesis.com

Agro Food Park 13



novonesis

At Novonesis, we believe that biological solutions are key to addressing global challenges. By harnessing enzymes, functional proteins, and microorganisms with science, we create transformative biosolutions for sustainable production, consumption, and living.

The potential for biosolutions is vast, and by collaborating with our partners in more than 30 different industries, we aim to transform businesses and create the change our world needs.

Having offices at the Agro Food Park enables us to be closer to our customers located in Jutland. The premise at Agro Food Park is primarily used for engaging with customers at business meetings, innovation sessions and other events.



OEM Automatic Klitsø A/S

Jesper Kallehauge

Business Area Manager

Email: Jesper.kallehauge@oemklitsø.dk

www.oemklitsø.dk

Agro Food Park 26



OEM Automatic Klitsø delivers reliable automation solutions for the industry. We work closely with our customers and suppliers.

Through technical expertise and a wide range of products and services, we ensure that we consistently add value to our customers' products and processes.

Our most important task is to ensure that we are a trusted partner to both our customers and suppliers.



Orange Cyberdefense

Bettina Nyberg

HR Manager

Email: bettina.nyberg@orange cyberdefense.com

www.orange cyberdefense.com

Agro Food Park 26



Orange Cyberdefense

Orange Cyberdefense is an IT security supplier that implements, operates and manages strategic IT security solutions. They help customers analyze their IT security, monitor and protect their networks, systems and critical data, as well as advising on how to prioritize actions in relation to the current threat picture.

Orange Cyberdefense has chose to become part of Agro Food Park because of the community that it is. Here they can concentrate on their mission to create a safer digital society and at the same time create awareness about IT Security with their neighbors.



PlanetDairy ApS

Paul Cornillon

Chief R&D Officer

Email: pc@planetdairy.com

www.Planetdairy.com

Agro Food Park 13



PlanetDairy creates more sustainable and priced fairly dairy products, which do not compromise on taste, nutrition, and functionality, starting with cheese. They target a minimum of 40% CO2 emissions reduction certified by a 3rd party.

Their cheeses are made by combining science and craftsmanship and the subtle blending of natural cheeses with plant ingredients.



Pressebureauet Aarhus

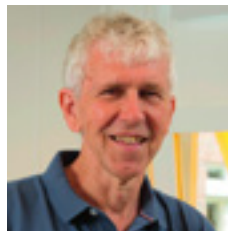
Helge Lynggaard

Journalist and editor

Email: hl@pressebureauet.dk

www.pressebureauet.dk

Agro Food Park 15



PRESSEbureauet | Aarhus

Pressebureauet Aarhus handles journalistic and communication tasks both online and in print. They specialize in agriculture, food production, and technology, and have a background in agriculture. As journalists, they are accustomed to finding the right angle and converting complex issues or technical texts into easily understandable and interesting stories.

They offer services like traditional journalism, strategic communication, startup and management of social media, production of newsletters and magazines and video production.



Prima Print

Thorbjørn Fynø

Owner

Email: thf@primaprint.dk

www.primaprint.dk

Agro Food Park 15



Prima Print is a printshop in Agro Food Park. They deal in all sorts of printing from roll-ups, banners and beach flags to flyers, posters, booklets and magazines in all shapes and sizes. At Prima Print you will always experience a high level of service, a fair price and no express fees for your jobs just because you need them done quickly.

Perhaps Denmark's smallest digital printing company, but it embraces a wide range of services.



RISE

Jørgen Korning

Agriculture and Food:

Email: jorgen.korning@ri.se

www.rise.se

Agro Food Park 13



RISE is an independent, state-owned research institute, with expertise, test-beds and demonstration environments for future-proof technologies, products, and services.

Key areas are ag-tech, plant production, animal production, food design, process tech, safety, sustainability, and life cycle analysis.

We want to increase collaboration with Scandinavian companies for them to take advantage of synergies in agriculture and food production of the Scandinavian markets.



Rockwell Automation, Inc.

Lars Bøgstrup

Sales Manager OEM

Email: lbogstrup@rockwellautomation.com

www.rockwellautomation.com/en-dk.html

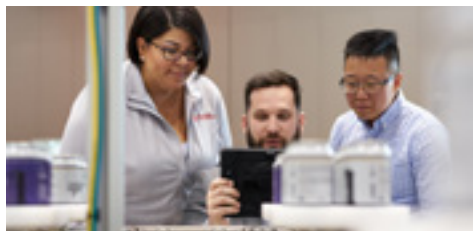
Agro Food Park 26



Rockwell Automation, Inc. (NYSE: ROK), is a global leader in industrial automation and digital transformation. We connect the imaginations of people with the potential of technology to expand what is humanly possible, making the world more productive and more sustainable.

Headquartered in Milwaukee, Wisconsin, Rockwell Automation employs approximately 26,000 problem solvers dedicated to our customers in more than 100 countries.

To learn more about how we are bringing the Connected Enterprise to life across industrial enterprises, visit www.rockwellautomation.com.



Schippers Denmark

Morten Jakobsen

Country Manager

Email: m.jakobsen@schippers.dk

www.schippers.dk

Agro Food Park 13



Schippers Denmark is a subsidiary of MS Schippers in The Netherlands. They develop and sell products and services to farmers, to make the farmers' everyday work easier. MS Schippers primarily focuses on customized hygiene programs, called HyCare, that are specially designed for every farmer.

Schippers Denmark's office is practically located in Agro Food Park, because it's mid-way for all of the employees in Denmark and a very good place to have an office in general. Facilities and premises are excellent.



SCIO+

Karen Margrethe Balle

Branch Manager Poultry

Email: kmb@scioplus.com

www.scioplus.com

Agro Food Park 15



SCIO+ is a data science, computer vision and analytics company. They convert customer's production data streams into profitstreams. Their key technologies are: edge and cloud-based computing, time series analysis from sensors used in livestock production, intelligent camera surveillance for livestock production and a combination of statistics, deep-learning and computer vision.

Agro Food Park provides SCIO+ with opportunities for networking, knowledge sharing, and access to resources and expertise in the agri-food sector.



Scopito

Ken Falk

Founder & CEO:

Email: info@scopito.com

www.scopito.com

Agro Food Park 13



Scopito is a software platform for effective analysis and sharing of visual inspection data. Visual inspection is a technique for detecting defects using the naked eye to ensure equipment is working properly or that manufactured products are being made to specification.

Scopito makes it simple to manage governance, risk & compliance of your critical infrastructure assets.

With options like AI-analysis, on-premise installation, and custom integrations, they can accommodate many requirements.



SEGES Innovation

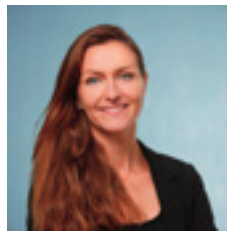
Rina Valeur Simonsen

Head of Secretariat

Email: rina@seges.dk

www.seges.dk

Agro Food Park 15 + 26



SEGES Innovation is an independent innovation company that develops new knowledge and concrete solutions for sustainable agriculture and food production.

More than 500 specialists also translate in-depth knowledge about agriculture and food into advanced software that shows new ways forward.

SEGES Innovation has its head office in Aarhus and branches in Copenhagen and Karup J.



SKOV

Margit Skovbjerg Berner

R&D Manager, doi-sensors

Email: msb@skov.dk

www.skov.com

Agro Food Park 15



SKOV contributes to efficient and sustainable global food production that delivers healthy food produced in respect to animal welfare. The company provides climate solutions, farm management, and digital value chain services for animal production worldwide.

The agricultural future is data-driven! SKOV is located at Agro Food Park, among other innovative companies, because it inspires them to develop highly advanced farm management solutions for the benefit of farmers worldwide.



Spiras

Niels Peter Madsen

Konst. adm. direktør

Email: npm@spiras.dk

www.spiras.dk

Agro Food Park 15



Spiras works to create quality of life and good economy for conventional and organic farmers in several production branches such as cattle, pigs, poultry, plant breeding, etc. Spiras provide high professional advice based on credible and responsible conversations.



Sustainor

Dennis Thaagaard

CEO & Founder:

Email: dennis.thaagaard@sustainor.eu

www.sustainor.eu

Agro Food Park 26



Sustainor is a consultancy and IT company that helps companies in the process to develop and implement the right way to work with CSR and sustainability. The ESG platform Sustainor Backbone is the backbone of their service. Companies exist to make money, and it must be profitable to be sustainable. That is what Sustainor helps figuring out.

Sustainor feels at home in AFP as they are ESG experts in the food sector covering all parts of the value chain.



TeleSense

Thomas Kylling

CEO

Email: thomas.kylling1@upl-ltd.com

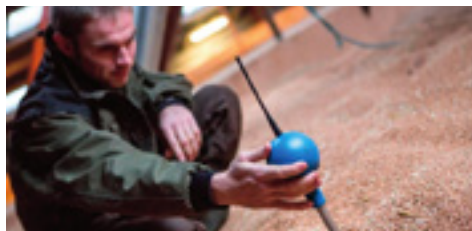
www.telesense.ag

Agro Food Park 15



TeleSense uses scalable sensor technology on an artificial intelligence (AI) platform to monitor temperature, humidity and carbon dioxide (CO₂) levels in stored grain and other crops. They use fixed and portable sensors to monitor the condition of stored food commodities, automates the early detection of potential issues such as hotspots, excess moisture, and pests and mitigates spoilage, quality degradation, and food waste.

TeleSense has their main office in Agro Food Park, where they connect and network with the other companies.



VikingDanmark

Hans Peter Bay

CEO

Email: hpb@vikingdanmark.dk

www.vikingdanmark.dk

Agro Food Park 12 - 14



VikingDanmark is an association owned by the Danish cattle farmers. One of Viking's most important tasks is to supply semen from bulls with high economic value. They have a nationwide insemination and counselling service, and offers strategic advice on breeding and reproduction in the individual herd in collaboration with the herd owner, employees, inseminator and adviser.

VikingDanmark resides at Koldkærgård, which is the oldest building in Agro Food Park. Dating back to the 1200s.

In 2018 Viking built a new domicile at Koldkærgård, to meet modern day requirements.



VISUE A/S

Claus Lund

CEO

Email: clu@visue.net

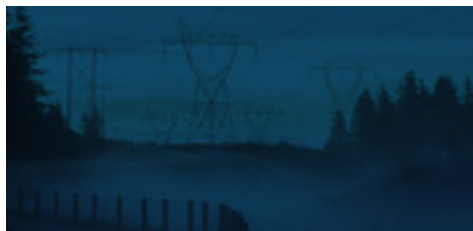
www.visue.net

Agro Food Park 26



VISUE supports security of supply in utility companies. At VISUE, they develop and operate IT systems, including monitoring and security systems. Their systems make data flow easily, enabling efficient digitalisation, optimization, and green transition and thereby create value for utility companies, consumers, and society as a whole.

VISUE's solutions are based on knowledge, collaboration, development and efficiency. Therefore, it is valuable for VISUE to be part of the innovative environment in Agro Food Park.



Warmings

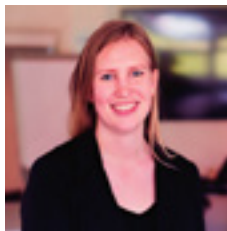
Laura Warming

Founder

Email: lw@warmings.net

www.warmings.net

Agro Food Park 13



Warmings is a food consultancy company that offers product development support, sensory analysis, consumer research and market analysis to food and beverage companies to help them succeed with new and existing products and to avoid wasting resources invested in product development and marketing.

Our services include all formats of taste tests, digital consumer surveys and professional market analysis. We always tailor the analyzes to your needs.



Wbalance

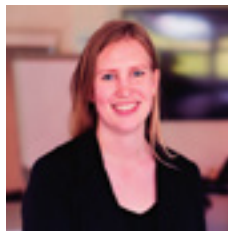
Laura Warming

Founder

Email: lw@wbalance.dk

www.wbalance.dk

Agro Food Park 13



Wbalance® is an innovative food company that develops, market and sells unique, tasty and functional drinks with high nutritional value. They are known as the developer of the functional drink, Wbalance No. 1. A relaxing and delicious drink made from tart cherries and active ingredients chamomile and lemon balm which should help you relax and have a better sleep. The product contains a unique and tasty composition of fruit, berries and plant extracts. In addition, both liquid and

nutrition are important for the body to be in balance and therefore also for good sleep.



Würth Elektronik Danmark

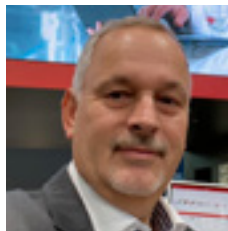
Ole Sanggaard Knudsen

General Manager

Email: Ole.SanggaardKnudsen@we-online.com

www.we-online.com/en

Agro Food Park 26



WÜRTH
ELEKTRONIK

Würth Elektronik Danmark A/S is a company in the German Würth Group. The Danish sales office is located in Agro Food Park 26. Würth Elektronik is a production and distribution company within electronic components. These articles are used in any electronic product from the smallest IoT devices to large industrial machines and also in machines and devices for food and agriculture. Examples of use is the innovative horticulture LED's for green houses which is a more sustainable and significantly more energy optimal solution compared to yesterday's high

energy consuming lights as well as refrigerators, freezers and agriculture machines. Würth Elektronik is both a manufacturer and distributor of products directly to the customers. Würth Elektronik's motto is "more than you expect". This relates to the customer experience as well as in product quality.



Økologisk Landsforening

Helle Borup Friberg

CEO

Email: hbf@okologi.dk

www.okologi.dk

Agro Food Park 26



Økologisk Landsforening is an NGO that works within development and propagation of ecology with the aim to create a sustainable food system. The organization collaborates with four member groups - the organic farmers, companies that sell or produce organic products, professional kitchens, and personal members. Together we form a strong, democratic core who works politically and ambitiously with ecology and sustainability.

Økologisk Landsforening appreciate being a part of a big foodcluster in Agro Food Park with innovation and knowledge sharing.

